

## Hindu Temple Antelope Valley- MahaVishnu Temple



**CSA Partners Ltd.**  
Architects & Urban Designers



Top: View of Main Temple from SW

### Media Link:

<https://www.csa-partners.com/publications/AntelopeValleyPress-Aug2013.pdf>

[https://www.indiawest.com/entertainment/global/global-fusion-concert-raises-funds-for-hindu-temple/article\\_cca3dafb-bf8a-591a-b9a9-84fe649f5619.html](https://www.indiawest.com/entertainment/global/global-fusion-concert-raises-funds-for-hindu-temple/article_cca3dafb-bf8a-591a-b9a9-84fe649f5619.html)

email: [contact@csa-partners.com](mailto:contact@csa-partners.com) web: [www.csa-partners.com](http://www.csa-partners.com)

**Context:** The Hindu population of the Antelope Valley region near Los Angeles consists of roughly a dozen immigrant groups vibrantly practicing the rituals of their faith. For years congregants have been worshiping out of temporarily rented reception areas acquired on a weekend basis, a situation inadequate for the physical needs of the community and the sanctity of their worship. Accordingly, a visionary cardiologist approached our firm to create a permanent sanctuary, with a core group of community leaders in the area working to transform the complex into a reality.

### Project Data:

Building type  
Religious-Temple  
Sustainability/LEED  
Title 24 Certified  
Location  
Lancaster California

Site Area  
91,930 sf

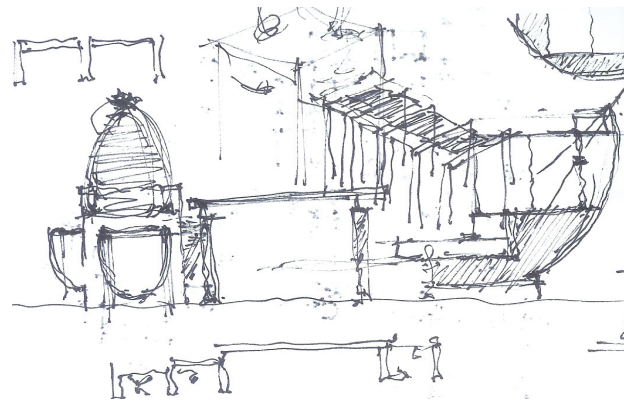
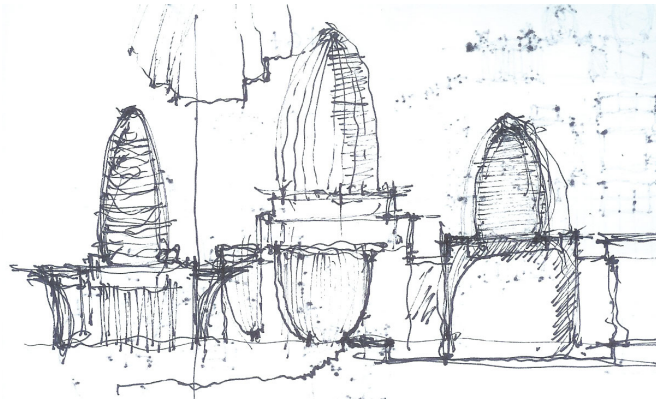
Project Area  
18,237 sf Phase 1 (includes walkways)  
5,500 sf (Building Area-Phase 1)

Client  
Hindu Temple of Antelope Valley

Completion Year  
Substantial Comp. Oct 2014  
Construction Cost  
2.75 Million in 2014

Client Satisfaction through Design Excellence

## Hindu Temple Antelope Valley



Top L+R: Conceptual sketches evolution of form  
 Bottom: View of Temple complex from NE

**Client Brief:** The clients requested a Temple dedicated primarily to Lord Vishnu, one of the major deities of most Hindu traditions and the Supreme God of the 'Vaishnavite' tradition. The client also requested additional accommodations for 6-8 other deities of the Hindu pantheon as selected by the community, with a traditionalist Temple of northern and southern Indian confluence placed behind modernist supporting facilities designed to inspire younger generations to fervent worship.

**Concept:** Having reviewed numerous precedents, our office chose to design the temple finial after the pattern of a Shikhara found in the Kangra temple district of the Himachal Pradesh region of northern India. The selection pays homage to the cultural attribution of Kangra as a birthplace of Hinduism, noting that the quadripartite Shikara at Kangra is also one of few Indian temples to successfully conjoin the traditions of Vishnu and Shiva worship. This style of temple is also appropriate as a geographically synthetic typology, given similar examples can be found in diverse regions of India.

Our office designed the main entrance sequence, or 'Maha-Mandapa,' as a series of gateways similar to that of a hypo-style hall, which is a traditional motif found in most classical architectural styles; however, we inserted a modernist glass cube into the space to create a year-round structure that is both transparent and weatherproof. The transparency of the 'Maha-Mandapa' thereby inspires the devotee to pass through each



Hindu Temple Antelope Valley



Top L: Interior view of main hall  
 Top R: View of main entry from south  
 Bottom L: View from SE  
 Bottom R: View from SW



portal in cognition of a journey from the profane to the sacred, with the structure of the Temple itself elevated on a plinth. We designed an interior courtyard that can—depending on future expansion—be enclosed by a wall concealing office space on one side, with additional allocation of space for the future expansion of minor ‘templums.’ The fourth visual wall of the interior courtyard is to be enclosed by landscaped contours. The complex is designed to allow for over 35,000 sf. of future expansion.

**Intent and Recognition:** The building has been published in the Antelope Valley Press, India West daily and Faith & Form Architecture magazine

Architects & Urban Designers



# Hindu Temple Antelope Valley

CSA Partners Ltd.



Top L : Aerial View of site south  
Top R: View of Navgraha/Chapel  
Bottom L: Aerial View of site SE  
Team  
Cyrus Subawalla- Principal Designer

Architects & Urban Designers